

(6th) AE/Energetic particles session

1. Database of AE

- ✓ LHD, H-1NF, Heliotron J: Blackwell made new version of Data mining (Update Clustering way)

2. Effect of EH/ECCD on AE (for control of AE)

- ✓ TJ-II : Effect of ECH/ECCD, To clarify the mechanism of not only ECH but also ECCD.
- ✓ Heliotron J : Effect of ECH, Targeting on GAE for the comparison with TJ-II result in order to get unified knowledge.
- ✓ LHD : We observed effect of ECH on AE, stabilization and destabilization.
- ✓ Link to ITPA? (EP-7: ECH effect on AE. Next ITPA-EP to be held at CIEMAT on next April. Alvaro will make a presentation)

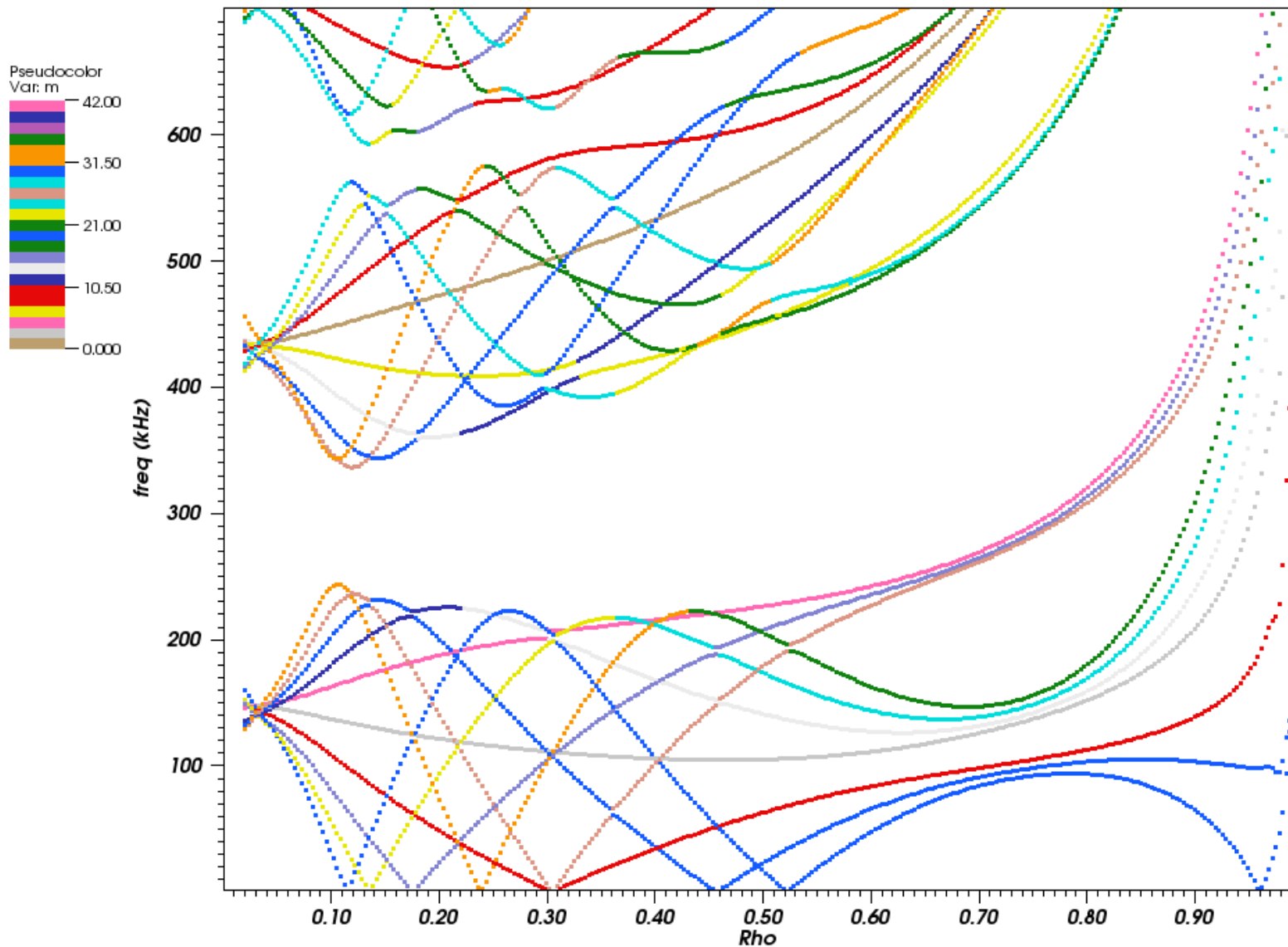
3. Anomalous transport of EP by MHD instabilities.

- ✓ Heliotron J : We observed the ion loss caused by AE in (F)LIP
- ✓ TJ-II : New LIP will be installed under collaboration among EU institutes (Ascasíbar & García-Muñoz).

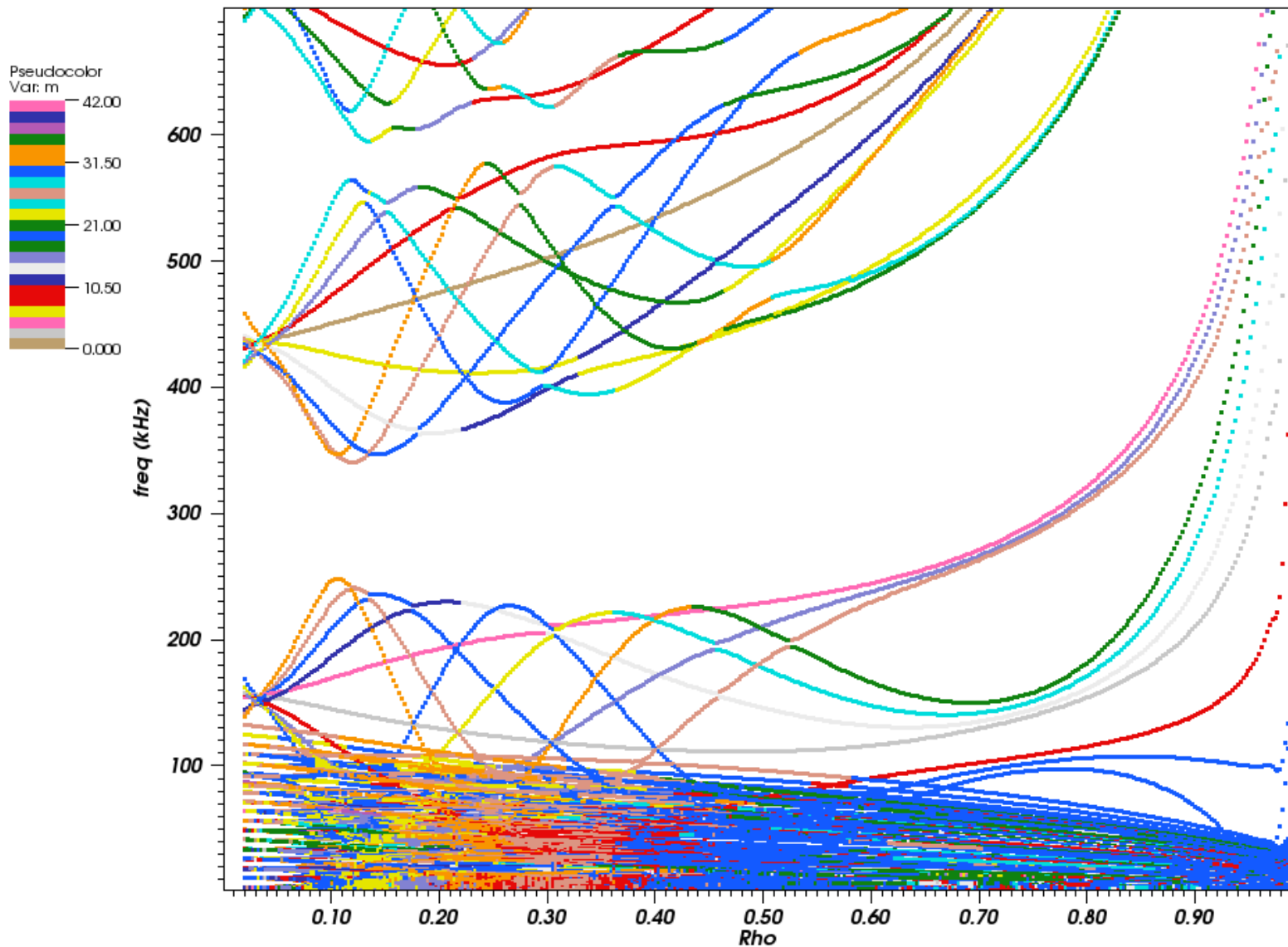
4. Low frequency modes in gap caused by Alfvén and acoustic waves

- ✓ HSX, CHS, LHD : energetic electron can drive the mode
- ✓ LHD, Heliotron J, TJ-II(?) : fast ion can drive beta-induced AE (B)
- ✓ New version of STELLGAP (D. Spong) : consider the coupling between shear Alfvén wave and acoustic wave. → compare with exp. result

Continua of shear Alfvén wave in Heliotron J (by D. Spong)



Continua of shear Alfvén wave in Heliotron J (by D. Spong)



Continua of shear Alfvén wave in Heliotron J (by D. Spong)

